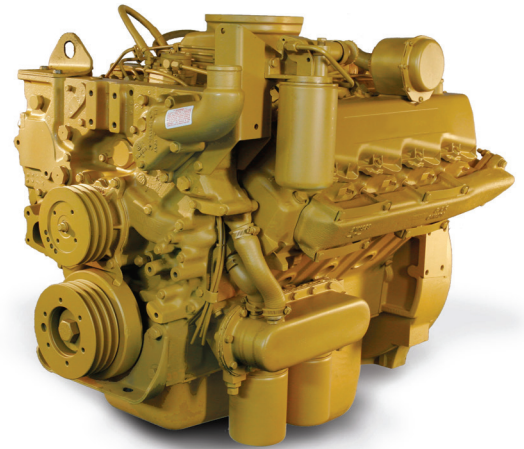


PRODUCT SHEET:

RAMPTECH® CATERPILLER® 3208 DIESEL ENGINE



Caterpillar 3208 Turbo



ENGINE OVERVIEW

Caterpillar 3208 engines are used in many GSE applications such as mid-sized Aircraft Push Back Tractors, Ground Power Units, PCA Units, Air-Start Units, High Lift Cabin Service and Catering Trucks, Snow Removal Equipment and Passenger Buses.

Caterpillar 3208 engines are available in both naturally aspirated and turbo charged versions with horse power ratings between 210 – 450bhp.

TO PLACE AN ORDER

Before calling to request price and availability, please gather the following information from the data tag located on the valve cover:

- Serial number
- Turbocharged or naturally aspirated
- Arrangement number (AR Number)
- Vehicle/equipment make and model
- Sump location (front, rear, center)
- California model with EGR (if applicable)

RampTech offers two options for the Caterpillar 3208 engine

COMPLETE DROP-IN INCLUDES:

Consisting of remanufactured Long Block assembly, as noted above, plus the following additional items

- Dipstick and tube
- Water pump
- Oil cooler
- Turbocharger*
- Valve covers
- Fuel filter assembly
- Intake manifold
- EGR assembly*
- Flywheel housing
- Oil pan
- Front cover and seal
- Complete fuel system
- Front damper
- Exhaust manifolds
- Oil filter

**Where applicable*

BASIC LONG BLOCK ENGINE

Base engine consisting of a complete remanufactured block fitted with remanufactured cylinder heads. No bolt on items or accessories. No tin wear. No manifolds.



Anticipating needs, meeting demands. Reducing costs.



Sage Parts
30 Hub Drive, Melville, NY 11747
+1.877.SAGE.877 | +1.631.501.1300 Tel
+1.631.501.1619 Fax
info@sageparts.com

www.sageparts.com